



**ALASKA DIVISION OF HOMELAND SECURITY &  
EMERGENCY MANAGEMENT**



**SITUATION REPORT 23-082 • MARCH 23, 2023**

Toll-Free 1.800.478.2337

Anchorage Area 907.428.7000

SEOC 907.428.7100

<p><b><u>SEOC Preparedness Level</u></b> Level 1 – Routine Operations</p>	<p><a href="http://ready.alaska.gov">http://ready.alaska.gov</a></p>	<p><b><u>National Terrorism Advisory System:</u></b> <a href="#">Read the NTAS Bulletin here</a></p>
<p><b><u>Maritime Security (MARSEC)</u></b> Level:1-Minimum Appropriate Security Measures</p>	<p><b>WHO Novel Coronavirus Pandemic (COVID-19):</b> <a href="#">2019 Novel Coronavirus</a></p>	<p><b><u>Alaska Military Installation Force Protection Level:</u></b> FPCON Bravo</p>

(Significant changes from previous situation reports are in red.)

**Significant Issues:**

None

**State of Alaska Department of Health (DOH)**

The DOH is leading the State of Alaska COVID-19 Recovery, supported by the SEOC and other state departments as required.

For current COVID-19 information, see:

<https://covid19.alaska.gov/>

<https://www.cdc.gov/coronavirus/2019-ncov/index.html>

**NTAS Bulletin**

The U.S. Department of Homeland Security has issued an updated National Terrorism Advisory Bulletin. The updated bulletin can be viewed at the below link

To read current or expired advisories, click the link below:

<https://www.dhs.gov/national-terrorism-advisory-system>

**Travel Alerts and Conditions**

For current driving conditions dial 511 or link to <https://511.alaska.gov/>

**Barry Arm Landslide / Tsunami Risk**

For the latest information on the Barry Arm Landslide and Tsunami risk, click here:

[DGGs Barry Arm Landslide and Tsunami Hazard](#)

**Recent Earthquakes**

USGS Earthquake Information: <http://earthquake.usgs.gov/>

National Tsunami Warning Center: <http://tsunami.gov/>

## Alaska Volcanoes

**Great Sitkin** Alert Level: **Watch** and Aviation Color Code: **Orange**  
**Aniakchak** Alert Level: **Advisory** and Aviation Color Code: **Yellow**  
**Semisopchnoi** Alert Level: **Watch** and Aviation Color Code: **Orange**  
**Takawangah** Alert Level: **Advisory** and Aviation Color Code: **Yellow**  
**Tanaga** Alert Level: **Advisory** and Aviation Color Code: **Yellow**  
**Trident** Alert Level: **Advisory** and Aviation Color Code: **Yellow**  
For Alaska Volcano updates, go to: <https://www.avo.alaska.edu/>

## Air Quality Index (AQI) Advisories

For the most up to date Air Quality Index Advisories:

<http://dec.alaska.gov/Applications/Air/airtoolsweb/Home/Index>

## Spills of Oil and Hazardous Substances

The ADEC Spill Prevention and Response page is located at:

<http://dec.alaska.gov/spar/ppr/spill-information/response/>

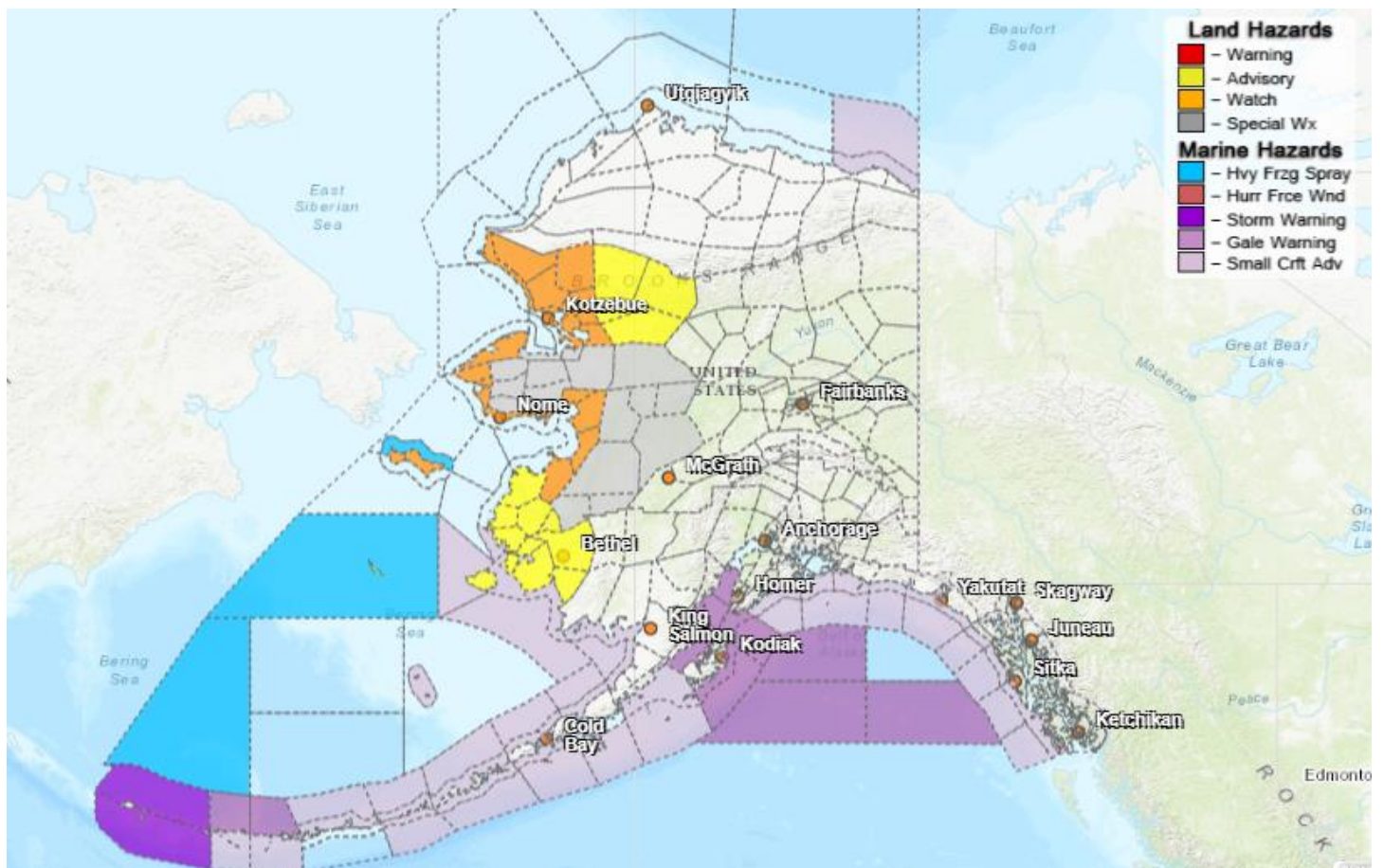
## Alaska Cyber Security Information

State Employees may sign up for cyber security notifications and alerts at

<https://oit.alaska.gov/security>

CISA-Cybersecurity Services and Tools: [www.cisa.gov/free-cybersecurity-services-and-tools](http://www.cisa.gov/free-cybersecurity-services-and-tools)

## Significant Weather:



Winter storm watches are in effect for the following areas:

- Southern Seward Peninsula Coast beginning Saturday morning through Monday afternoon for 12 to 18 inches of snow and winds gusting to 50mph.
- St. Lawrence Island, Bering Strait Coast, Baldwin Peninsula, Selawik Valley, Chukchi Sea Coast, Eastern Norton Sound and Nulato Hills from Saturday morning through Monday afternoon for 5 to 10 inches of snow and winds gusting to 50mph.
- Lower Kobuk and Noatak Valleys beginning Saturday morning through Monday afternoon for 6 to 12 inches of snow accumulation and winds gusting to 60mph.

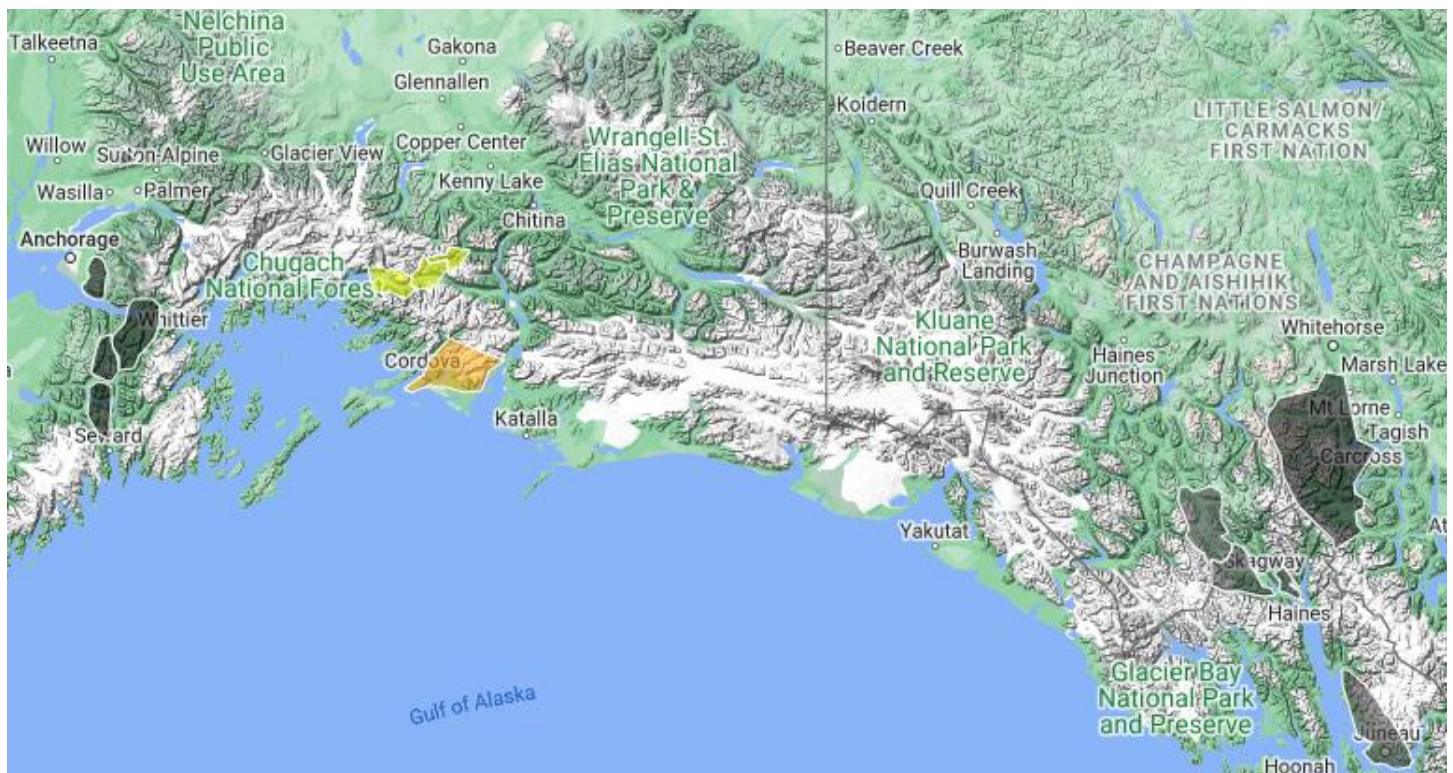
Winter weather advisories are in effect for the following areas:

- Upper Kobuk and Noatak Valleys until 4pm Friday for snow accumulation of 3 to 8 inches and areas of blowing snow.
- Yukon Delta until 10pm tonight for an additional 2 inches of snow accumulation and winds gusting between 30 to 50mph.
- Kuskokwim Delta through Thursday evening for 1 to 3 inches of snow and winds gusting to 40mph.

A special weather statement has been issued for a strong storm that is expected to move northeast through the Bering and Chukchi Seas Friday night and into this weekend. This system will likely bring heavy snow, strong winds, blizzard conditions, and the possibility of freezing rain to areas south of the Seward Peninsula and in the lower Yukon River Valley.

For more information and the most current weather, go to: <http://www.weather.gov/arh>.

### **Avalanche Forecast:**



- Haines – Considerable advisory level above 2,500ft and moderate advisory level below 2,500ft.
- Valdez – Moderate avalanche advisory level at all elevations.
- Cordova area: Considerable advisory level above 2,000 ft, Moderate advisory level from 1,00ft to 2,000ft and low advisory level below 1,000 ft.
- Turnagain Pass – High avalanche advisory level at all elevations.
- Hatcher Pass – Considerable advisory level at upper elevations and Moderate at mid elevations on slopes 35° and steeper.

Check the Avalanche Forecast Center closest to your area for the most up to date information on avalanche potential. <https://alaskasnow.org> or <https://www.weather.gov/afc/avalancheweather>

**The Next Situation Report:** will be **24 March 2023**. A significant change in the situation or the threat level will prompt an interim report. This report is posted on the internet at <https://ready.alaska.gov/sitrep>.

To register for email distribution, go to <http://list.state.ak.us/mailman/listinfo/dhsem.situation.report>. Direct questions regarding this report to the SEOC at 907-428-7100 or [seoc@alaska.gov](mailto:seoc@alaska.gov)